

SUNJIN LABELING SYSTEM

AUTO SELF-ADHESIVE
Korean Leaders in Labeling Machines



...balancing formula that combines
...with with actinacta and acts to
...system and promote well-being.

(A. ...
...acid (from
...modified food
...)

...evaluated by the Food and Drug
...to diagnose, treat,
...in a cool, dry place. Keep out
...if seal is broken or missing.

**Daily Value not established



SUNJIN
L A B E L I



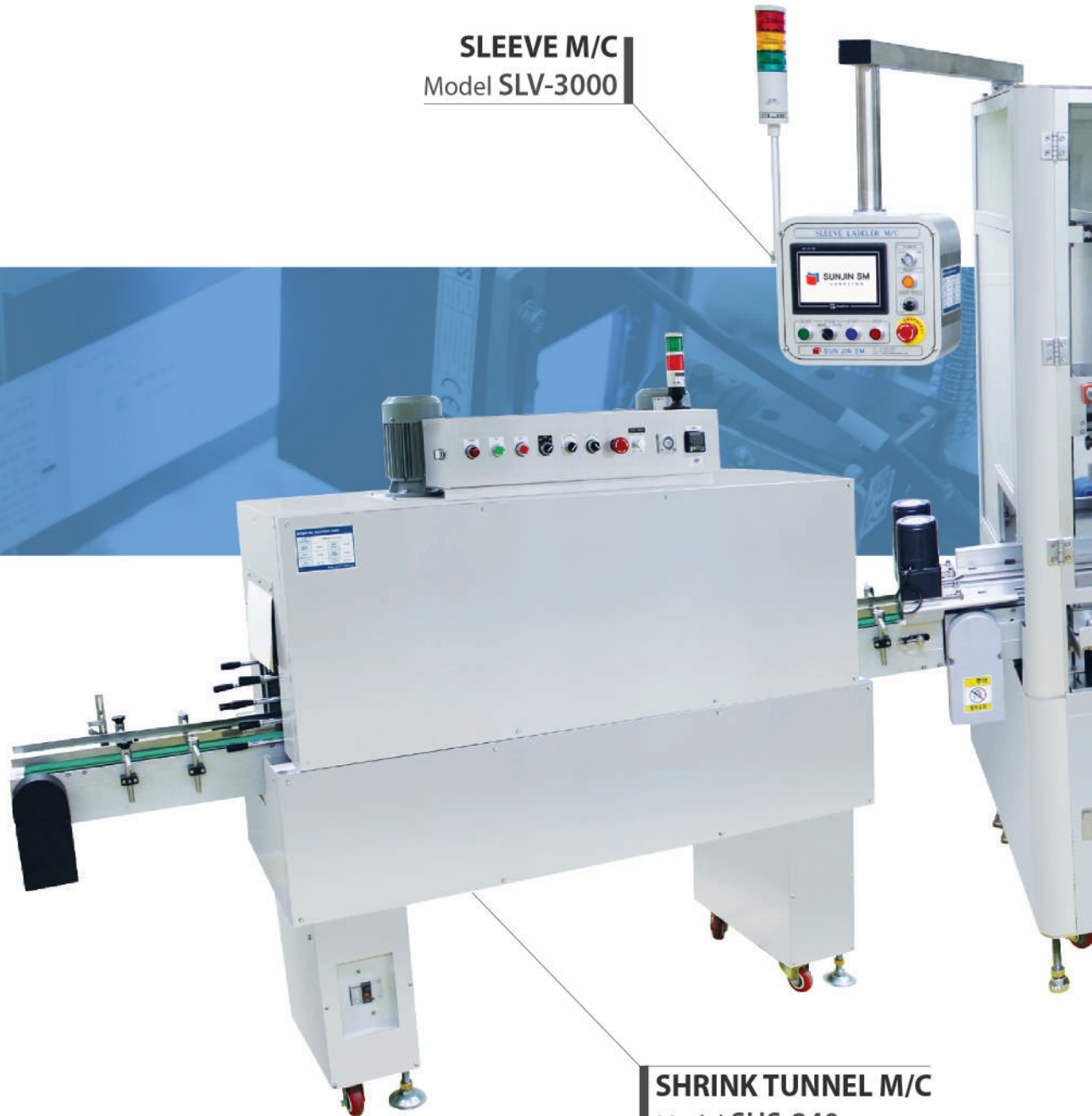
Smart label application, smart company image. Consult SUNJIN SM for all your labeling needs!

- 1982** SunJin Machinery established. Developed the Travel Tissue Machine and Film Sealer. Developed the Wrapping Machine. Developed the Model Polishing Machine.
- 1983** Developed the Automatic Labelling Machine for the first time in the country. Technical tie-up with HOMEI SANKYO, Japan. Started export of the Automatic Labelling Machine to Japan.
- 1985** Began to sell in the domestic market(Samsung, Lotte, Suttong) OEM production and export of more than 100 sets per year Began to sell in the domestic market(Samsung, Lotte, Suttong)
- 1990** Developed the Barcode Printer Applicator for the first time in the country Began to produce B-30 Printer-Loaded Applicator.
- 1991** Developed the X-Y-Z Slide of the labelling system(one-touch type) for the first time in the country.
- 1992** Attained the sales record of more than 400 sets in the domestic market and more than 500 sets exported to Japan
- 1993** Developed the Ultra-precision Labeller(position error ± 0.1)
- 1994** Developed the Oval Labeller(centering unit) Developed the AC Servomotor Labeller for the first time in the country.
- 1995** Over 1,000 sets exported, over 700 sets sold in the domestic market.
- 1998** Exclusively developed the Cosmetic Lipstick Machine(a small-sized labelling machine)
- 1999** 1,400 sets exported, 1,700 sets sold in the domestic market
- 2000** Developed the Automatic Feeding Labeller. Developed the Automatic Positioning Labeller
- 2001** CCD Camera detection equipment. Developed the Automatic Card Labeller. Developed the Automatic Bankbook Labeller(Magnetic)
- 2002** Developed the Small-sized Dry Battery Labeller Exported Dry Battery 600EA/MIN Labeller to China(Rocket Battery OEM)
- 2003** Developed the High Speed Positioning Labeller. Exported LG Labeller to China, installed in 9 lines Developed the Top and Bottom Rounding Labeller.
- 2004** SunJin SM founded. Export expanded to the whole region of the American continent, Europe and Asia
- 2005** supply expanded to pharmaceutical industry with Developed labelling machine provided in the GMP. export to Russia & India pharmaceutical company.
- 2006** Developed dry battery high speed labeller(800ea/min)
Exported dry battery 800ea/min high speed labeller to China(nan-fu co.,ltd)
Exported mascara labeller to France YLS. Developed high speed ampoule labeller(400ea/min)
Developed instruction adhesive machine. Acquired certification of CE for high speed labeller(SP-3300)
- 2007** Installed barcode printer, vision system and scanner in high speed labeller - fully automation Export to Jordan & New Zealand pharmaceutical company. Exported mascara & nail polish labeller to Turkey. Developed tube labeller.
- 2008** Developed high speed belt type centering unit for position set with oval container. Acquired certification of CE for lip stick labeller(SC-2400)
- 2009** Patented high speed belt type centering unit for position set with oval container.
- 2010** Developed bundle packing machine. Developed instruction adhesive machine for medicine
Developed film shrink packing machine. Patented new model centering unit.
- 2011** Acquired a new company building in Bucheon.
- 2012** Nomination of young internship program Nomination of creation of jobs Enterprise Resources Program(ERP) Nomination of INNO-BIZ
Nomination of Venture Business Acquired a ISO9001.
- 2013** Developed high accuracy Tube Labeler.
- 2014** Participation in Interpack in Germany
Participation in Korea Pack in ,Kintex, Korea
Developed full automatic labeling system for egg tray
Obtain a patent on instruction labeling system with Hanmi Pharm
- 2015** Exported lipstick / mascara labeling system to Malva Cozmetic in Turkey
Participation in Seoul Food Pack in Kintex, Korea

Description Sticker Labeling Machine Full Line System

Model SDL-7000S

SLEEVE M/C
Model SLV-3000



SHRINK TUNNEL M/C
Model SHS-240





RFID TAG LABELING M/C
Model SRD-300

DESCRIPTION M/C
Model SDT-5000

LABELING M/C
Model SP-3300S

Target Products	Flow Chart	
containers with instruction (description) attachment	BOTTLE IN PUT	LABELING M/C
Capacity		
Variable up to 150 PPM	RFID TAG LABELING	INSPECTION
Dimension		
Approx 2400(L) x 1200(W) x 1750(H) mm	PRINTING	ATTACH THE INSTRUCTIONS
Features		
Stainless steel construction	— HOT STAMPING	SLEEVE M/C
Interlocked guarding	— INKJET PRINTER	
cGMP design	— THERMAL PRINTER	SHRINK M/C
Servo motor drive for label web		
Color touch screen display		

Top Labeling Machine

Model SJC-1000S



Target Products

Circular and rectangular with flat surface containers

Capacity

Max 120 BPM depends on label and container size & 1 operator

Dimension

Approx 2000(L) x 700(W) x 1500(H) mm

Options

Label hopper for high accuracy labeling
Hot stamp printer
Touch screen
Turn table

Top Labeling Machine (II)

Model SJC-1100



Target Products

Circular and rectangular with flat surface containers

Capacity

Max 50 BPM depends on label and container size & 1 operator

Dimension

Approx 2000(L) x 700(W) x 1500(H) mm

Options

Label hopper for high accuracy labeling
Hot stamp printer
Touch screen
Turn table

Card & Paperbag Labeling Machine

Model SJC-1500



Target Products

Phone card, bank book, envelop and any thin card type

Capacity

Max 150 BPM depends on label and container size & 1-2 operator

Dimension

Approx 1300(L) x 700(W) x 1600(H) mm

Options

Label hopper for high accuracy labeling
Hot stamp printer
Inkjet printer
Touch screen
Turn table

Top & Bottom Labeling Machine

Model SJC-2000



Target Products

Circular and rectangular containers for top and bottom labeling at once

Capacity

Max 80 BPM depends on label and container size & 1 operator

Dimension

Approx 2000(L) x 700(W) x 1600(H) mm

Options

Label hopper for high accuracy labeling
 Hot stamp printer
 Touch screen
 Turn table

Top & Bottom & Side Labeling Machine

Model SJC-2700



Target Products

Circular and rectangular with flat surface containers

Capacity

Max 120 BPM depends on label and container size & 1 operator

Dimension

Approx 3000(L) x 1300(W) x 1700(H) mm

Options

Label hopper for high accuracy labeling
Hot stamp printer
Touch screen
Turn table

Wrap Labeling Machine

Model SJC-3000



<p>Target Products</p> <p>Round containers</p>	<p>Options</p> <ul style="list-style-type: none"> Label hopper for high accuracy labeling Hot stamp printer Touch screen Feeder Turn table Upper belt
<p>Capacity</p> <p>Max 30 BPM depends on label and container size & 1 operator</p>	
<p>Dimension</p> <p>Approx 2000(L) x 700(W) x 1600(H) mm</p>	

Round & Rectangular Container Labeling Machine

Model SJC-3015 / SJC-3018



Target Products

Round (wrap) and rectangular containers (3 or 4 sides)

Capacity

Max 120 BPM depends on label and container size & 1 operator

Dimension

Approx 2000(L) x 700(W) x 1500(H) mm

Options

Label hopper for high accuracy labeling
Hot stamp printer
Thermal printer
Inkjet printer
Touch screen
Turn table

Front & Back Labeling Machine

Model SJC-3217



Target Products

Oval-shaped containers

Capacity

Max 180 BPM depends on label and container size & 1 operator

Dimension

Approx 2400(L) x 1200(W) x 1750(H) mm

Options

- Label hopper for high accuracy labeling
- Hot stamp printer
- Thermal printer
- Inkjet printer
- Touch screen
- Turn table

Vial & Ampoule Labeling Machine

Model SP-3300W



Target Products

Vials and Ampoules

Capacity

Max 550 BPM depends on label and container size & 1 operator

Dimension

Approx 3000(L) x 1000(W) x 1600(H) mm

Options

- Label hopper for high accuracy labeling
- Hot stamp printer
- Thermal printer
- Inkjet printer
- Barcode printer
- Barcode scanner
- Vision camera for misprinting
- Ejections system for no label
- Inout and output feeding table



Pharmaceutical Round Container Labeling Machine

Model SP-3300S



Target Products

Cylindrical containers

Capacity

Max 350 BPM depends on label and container size & 1 operator

Dimension

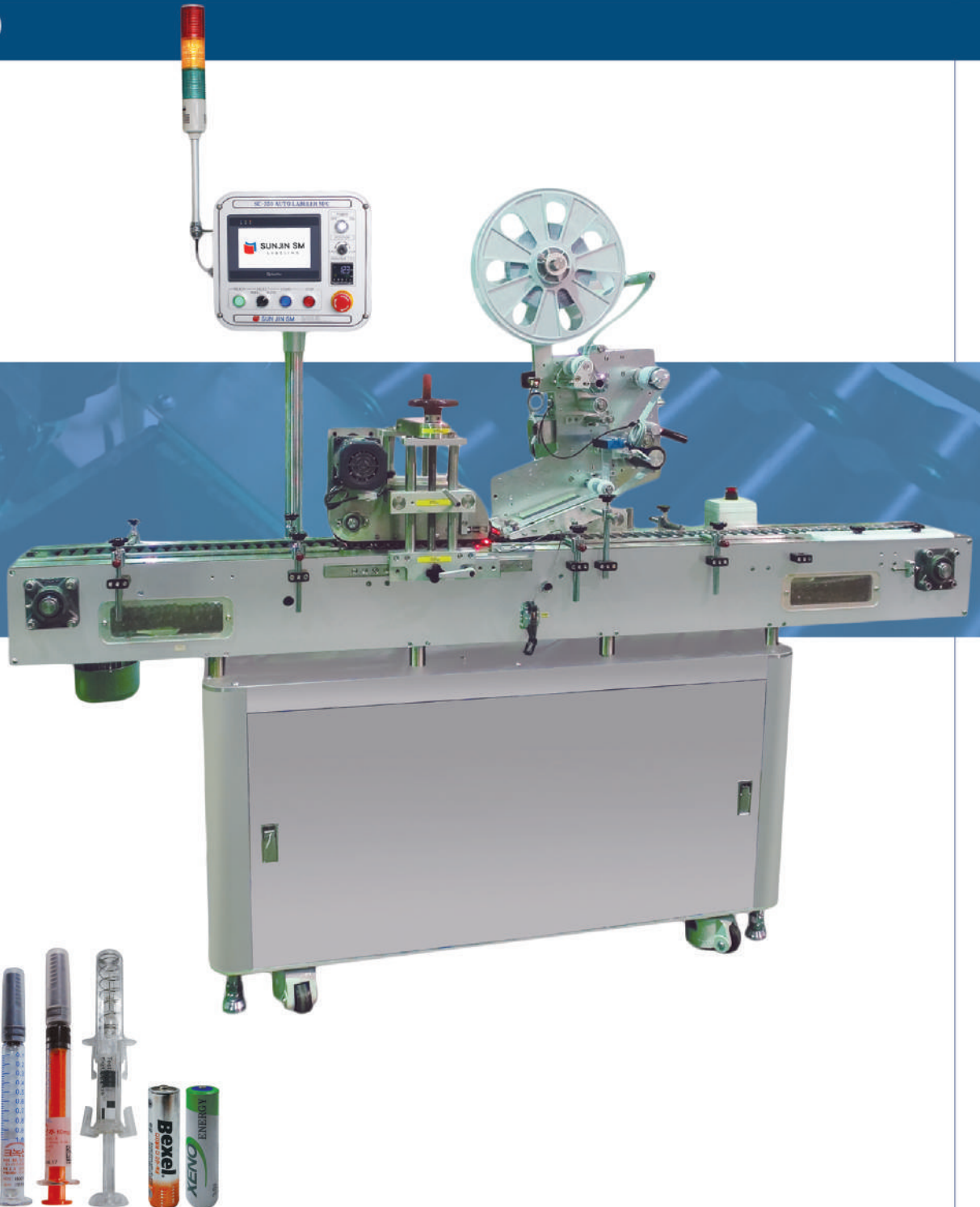
Approx 2200(L) x 1200(W) x 1750(H) mm

Options

- Label hopper for high accuracy labeling
- Hot stamp printer
- Thermal printer
- Inkjet printer
- Barcode printer
- Barcode scanner
- Vision camera for misprinting
- Ejection system for no label
- Input and output feeding table
- Input and output turn table

Horizontal Wrap Labeling Machine

Model SC-350



Target Products

Test tubes, batteries, and injectors

Capacity

Max 100 BPM depends on label and container size & 1 operator

Dimension

Approx 2400(L) x 1200(W) x 1750(H) mm

Options

- Label hopper for high accuracy labeling
- Hot stamp printer
- Thermal printer
- Inkjet printer
- Touch screen
- Turn table

Horizontal Wrap Labeling Machine Full Line System

Model SP-500



Target Products	Options
Test tubes, batteries, syringes, injectors, and stationary tubes	<ul style="list-style-type: none"> Label hopper for high accuracy labeling Hot stamp printer Thermal printer Inkjet printer Barcode printer Barcode scanner Vision camera for misprinting Ejection system for no label Feeder Elevator Inserting M/C
Capacity	
Max 300 BPM depends on label and container size & 1-2 operators	
Dimension	
Approx 6800(L) x 2700(W) x 2000(H) mm	

LABELER

INSERTING M/C



→ SHRINK FILM LINE



Lipstick & Mascara Labeling Machine

Model SC-2400 (Single Head) / SC-2404 (Dual Heads)



Target Products	Options
Lipstick, mascara, lip gloss, pencil, and eye shadow	Label hopper for high accuracy labeling
Capacity	Hot stamp printer
MAX 55 PPM	Auto-reject system for missing label detection
Dimension	
Approx 3000(L) x 1000(W) x 1600(H) mm	



Carton Labeling Machine

Model SJC-3500



Target Products

Tamper-evident label (security label) on carton

Capacity

Max 120 BPM depends on label and box size

Dimension

Approx 2000(L) x 700(W) x 1400(H) mm

Options

Label hopper for high accuracy labeling

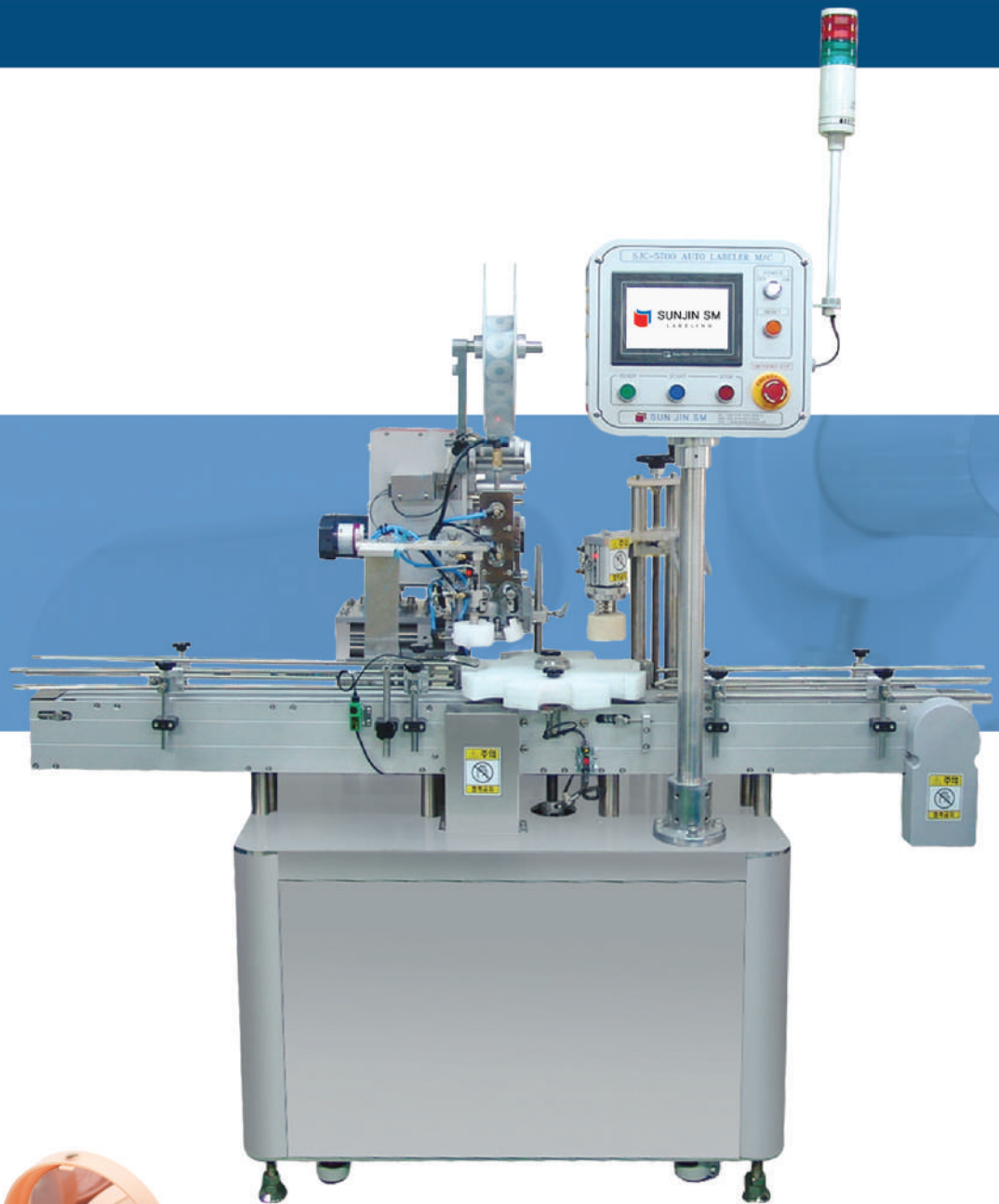
Hot stamp printer

Touch screen

Turn table

Cylinder Labeling Machine

Model SJC-5700



Target Products	Options
Cylindrical containers for high accuracy top labeling	Label hopper for high accuracy labeling
Capacity	Hot stamp printer
Max 45 BPM depends on label and container size	Inserting M/C
Dimension	Touch screen
Approx 2000(L) x 800(W) x 1400(H) mm	Turn table Chuck unit

Tube Labeling Machine

Model TU-120



Target Products

Soft or flexible compound tube

Capacity

Max 35 BPM with Position Control System
Max 70 BPM without Position Control System

Dimension

Approx 2400(L) x 1200(W) x 1900(H) mm

Options

Label hopper for high accuracy labeling
Hot stamp printer
Mini output conveyor
Touch screen

Barcode Editor & Applicator

Model SB-2700



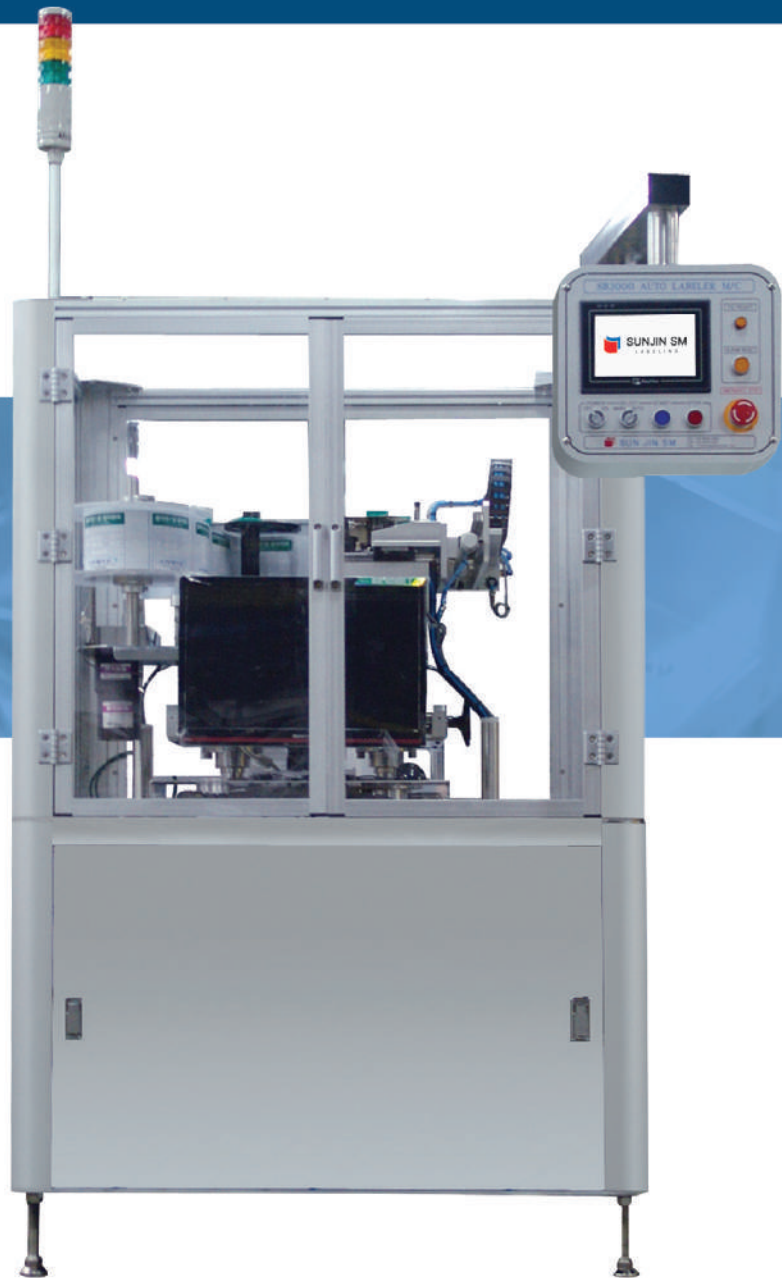
SCANNER



PRINTER LABEL HOPPER UNIT

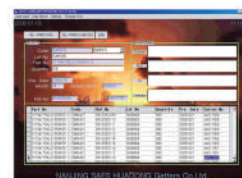


PRINTER



Connected to user's PC for onsite editing label specifications, barcode and applying directly to the product

- Product name, Manufacturing date, Serial number, Barcode details etc can be printed
- RS-232C, RC-422 communication port applicable
- Multi language support
- Self diagnostic error check
- Product monitoring



Semi-Auto Labeling Machine

Model SJ-300 / SL-350



Target Products

Cylindrical container

Capacity

Max 40 BPM depends on label and container size

Dimension

Approx 800(L) x 600(W) x 400(H) mm

Options

Hot stamp printer
Transparent label sensor

Semi-Auto Bundle Machine

Model SBT-50



<p>Target Products</p> <p>Multi packed box for tape packing</p>	<p>Options</p> <p>Hot stamp printer</p>
<p>Dimension</p> <p>Approx 1140(L) x 500(W) x 850(H) mm</p>	



SUNJIN LABELING SYSTEM

AUTO SELF-ADHESIVE



44, Bucheon-ro 419beon-gil, Ojeong-gu,
Bucheon-si, Gyeonggi-do, Korea.
TEL : +82-32-678-0400 / +82-32-678-9940~2
FAX : +82-32-678-9943 / +82-32-678-9934
E-mail : hyc019@naver.com
www.labelingmaker.com

OFFICIAL AGENT



百美洋行(香港)有限公司
Packomatic (HK) Co. Ltd.

香港葵涌大連排道152-190號
金龍工業中心第三座10字樓1室
Flat 1, 10/F, Block 3, 152-190 Tai Lin
PaiRoad, Kwai Chung, Hong Kong.
TEL : 852-2614-8918
FAX : 852-2614-3499
E-mail : packo@netvigator.com